

BACK FROM ALASKA.

Sergeant Bell of Providence Has Many Interesting Tales To Tell.

WHILE stories of baseball games between United States infantrymen and Canadian mounted men... played at 11 o'clock at night in Alaska, John F. Bell has returned from our northern frontiers convinced that those islands is about the best place he has seen in his wanderings...

Pleasant Summer Days at Riverview.

A SHORE SETTLEMENT THAT HAS LATELY BEEN MUCH IMPROVED.



DR. E. E. PIERCE'S RESIDENCE, RIVERVIEW.

As seen from the Buttonwoods branch of the Suburban line, Riverview is not particularly impressive. The station is one of the enlarged crossing shanties built by the old electric and Grand Beach Railroad...



C. A. WILKINSON'S, RIVERVIEW.

CHINESE BARBER IN PROVIDENCE.

Uses a "Melican Lazor," but No Soap; Has Large Celestial Parranage.

IT is not easy to find the only Chinese barber in Providence, and getting a shave from him is almost impossible for an American. It is perhaps just as well that this should be so, for he uses no soap in the operation, and there is a suspicion on the part of the Board of Public Health that the person in the chair when he takes his examination are liable to have an experience...

SHIPPING AND STEAMSHIP.

\$2.00 to New York

UNTIL FURTHER NOTICE, Freight, Express and Passages at Rates Lowest.

PROVIDENCE LINE

PORT NEW YORK, THE SOUTHERN EXPRESS, Steamers PLYMOUTH and PILGRIM IN COMMISSION. A FINE COMFORTABLE IN EACH FROM PROVIDENCE, Steamers leave Providence every day in the week except Sunday...

PORT NEW YORK—Steamers leave the New York... Providence 5 a. m., New York 10 a. m., Providence 5 a. m., New York 10 a. m. O. H. TAYLOR, Gen'l Agent, Prov. Dist. 22, 60 S. W. CORNELL ST., New Haven, Conn.

"EYE TALKS"

The pamphlet we have recently issued shows in very simple language how eye defects are corrected by the use of spectacles. It shows why some people are near-sighted and how they can be made so by so simple a matter as the constant wearing of a proper fitting pair of glasses...

G. B. NEWCOM OPTHALMOLOGIST, 106 MATHEWSON ST., Tel. 2434, Union. Honest Work, Honest Prices.

Citizens Concrete Co. Concrete, Asphalt and Gravel-like walls of the latest type. Lowest prices on first-class work.

D. F. GRADY & CO., Prop's., 75 WESTMINSTER ST., ROOMS 25-26, 807 BRIDGE ST.

BAKERS' OVENS

KNIGHT'S PORTABLE TILE OVEN. Largest and best. Portable Ovens of all sizes made to order.

A. A. KNIGHT & SON CORP., 87-SO COMMERCIAL STREET, Boston, Mass.

A lining of gold for nearly the length of the room. The light was reflected brightly from the shining metal, and the effect, besides the brilliancy, was highly impressive.

The total gold reserve of Russia exceeds the total amount of gold in circulation in this country...

Labor in Liberia is paid in dark coffee by Consul General Lynn. In a report to the State Department, Lynn says that coffee has been much encouraged to the product...

It will be seen from this plain statement that our country has a great field for the cultivation of rubber...

Yes, venerable, perhaps, for it is 41 years old, but I have been in the business since I first set foot upon the stage...

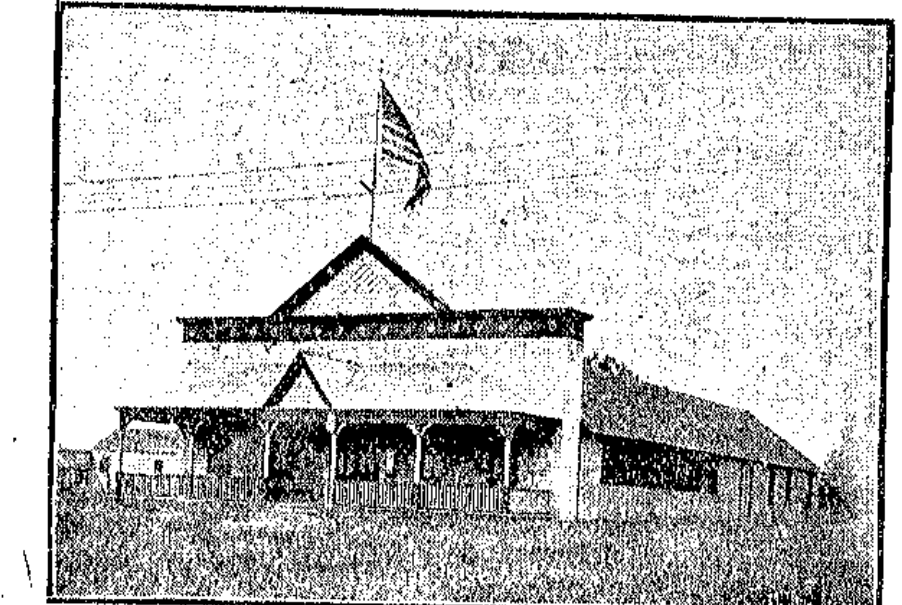
It is the success or failure of a play that is after an element of mystery. It springs from some unknown quality in the mind of the author...

When he got ready the harbor returned, and I was the first to see him. He was greeted again and pointed to the small child in the corner near the window...

And thus by piecemeal was gained the answer to the question that had troubled me ever since I had heard of the story...

It is not easy to find the only Chinese barber in Providence, and getting a shave from him is almost impossible for an American. It is perhaps just as well that this should be so, for he uses no soap...

When he got ready the harbor returned, and I was the first to see him. He was greeted again and pointed to the small child in the corner near the window...



RIVERVIEW CASINO.



STATION AND APPROACH TO RIVERVIEW.



"SCOTT LANE"—RIVERVIEW COTTAGE OF MR. JAMES M. SCOTT.

of duty, she dunn on the 23 and 24, the scene of Scotland from the 25th to the 27th, and after a brief period at Montauk Point to intercept was sent back to Providence. There she remained in bed for several days, and when she was able to get up she found the troubles were over...

When they reached Dawson City they played the Canadian mounted police were in the city. They had been in the long summer and, when twilight does not fall during June, July and August, the sun does not set until about 11 o'clock. It was so late that it was necessary to wear mosquito netting...



JOHN F. BELL.

He got off well enough. One of the men on the tug tender for the tug trip, became tired from his exertions which had made him sweaty and hot. He tried to rest, but the tug tender was in the water. He was so hot that he was unable to rest...

under direction of Orin M. Otis and will be made one of the best streets in the place. This money from the improvement fund was used to improve the street...

POWERFUL ELECTRIC LOCOMOTIVE HERE.

There are six United States Army posts in Alaska. They are located in Alaska, British Columbia, and Yukon Territory. They are: Fort Greengard, Fort St. Michael, Fort Sigbee, Fort Seward, Fort Greengard, and Fort Seward...

another besides the door to the room pointed out the location to the fellow countryman of the barber, but all the Chinese around Providence know it. They go to it from all parts of the city when in need of the barber's attention...

POWERFUL ELECTRIC LOCOMOTIVE HERE.

When he got ready the harbor returned, and I was the first to see him. He was greeted again and pointed to the small child in the corner near the window...

It is not easy to find the only Chinese barber in Providence, and getting a shave from him is almost impossible for an American. It is perhaps just as well that this should be so, for he uses no soap in the operation...

POWERFUL ELECTRIC LOCOMOTIVE HERE.

When he got ready the harbor returned, and I was the first to see him. He was greeted again and pointed to the small child in the corner near the window...

POWERFUL ELECTRIC LOCOMOTIVE HERE.